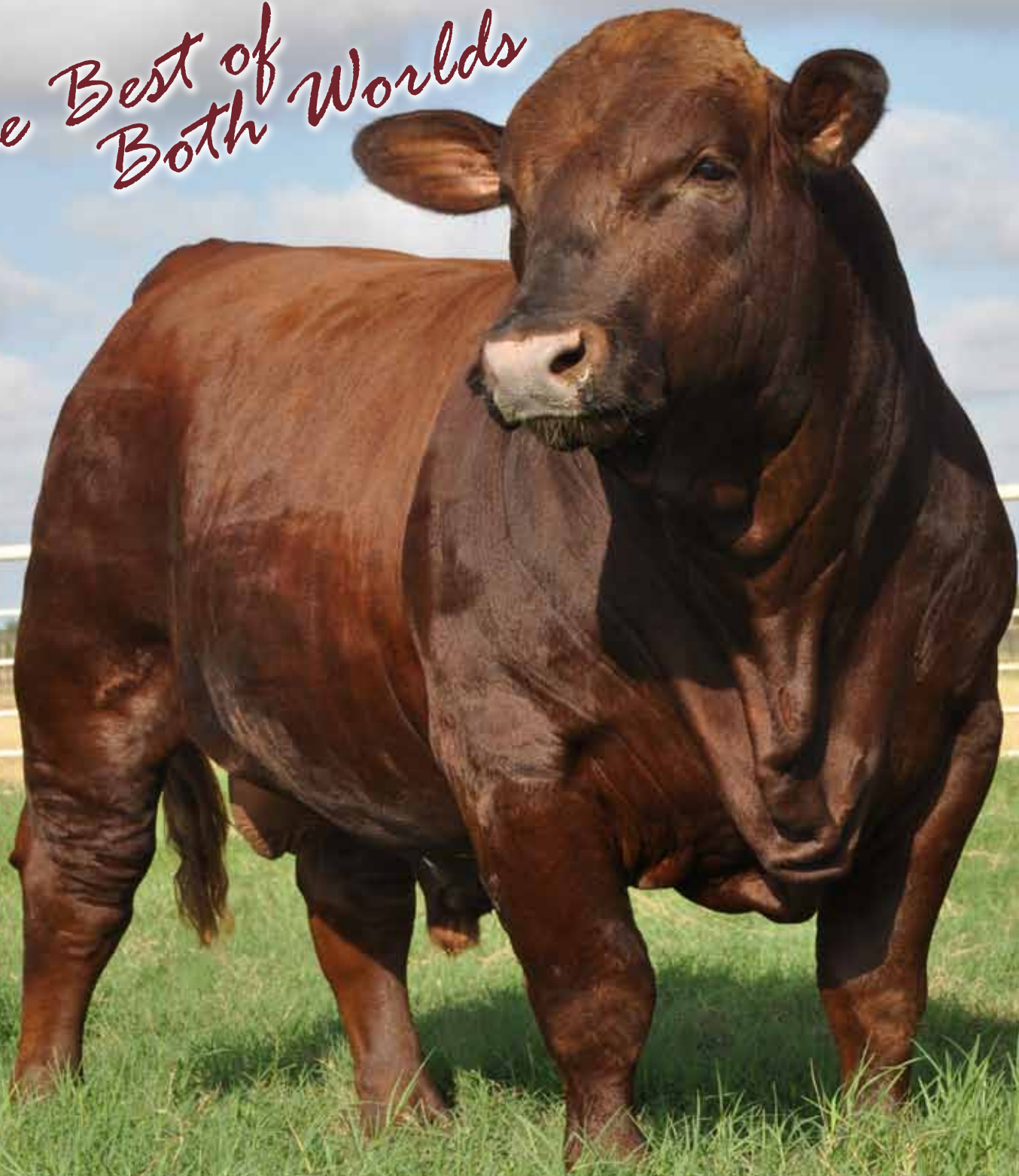


*The Best of
Both Worlds*



BEEFMASTER

International Semen & Embryo Directory

Bullet Proof



	BW	WW	YW	MILK	TM	SC	FAT	REA	IMF	RUMP
EPD	1.3	17	24	0	9	0.7	-0.07	-0.15	0.1	-0.08
ACC	.88	.85	.82	.38	-	.48	.63	.64	.66	.65

BULLET PROOF (864)

BBU No.	C931489
Birth Date	2/5/2006
ID Number	864
DNA Case No.	US9000957935 PV

**** CJ'S DESPERADO 530 C631430**
 DNA 16C BT 5760A
CJ'S BANDELERO 960 C809701
 DNA 100A BT 7189A
WORK OF ART 507 C611580
 BT 5694A
**** CAVALIER 19/5 C617557**
 DNA 302A BT 5679A
**** OASIS 655 le C828198**
 DNA 251620A BT 7628A
**** SEX LIFE 388 C714150**
 DNA 313360A BT 6533C

He is the **REAL THING!**

- He is a great red polled bull that is producing the most uniform calves in the breed.
- Long, thick and correct calves - just like him.
- His offspring are averaging over \$5,000 each.
- He produces calves, donors prospects and herd sires.
- His carcass data proves this bull is the REAL THING!



Semen: International \$50/straw - Domestic \$125/straw

Swinging 'B' Ranch
 Mackie & Norma Jean Bounds
 www.SwingingBRanch.com

Cattle Manager: Cesar Rodriguez 806-341-5610

For Semen Sales Contact:
 Mike Green, 3G Sales & Service
 threeg1990@yahoo.com • 979-229-6563

International Beefmaster Semen and Embryo Directory



**Beefmaster
Breeder
United**

210.732.3132 • www.Beefmasters.org

Key for EPDs Expected Progeny Differences

Accuracy	ACC	Accuracy of an EPD increases as more performance information on an animal and its relatives becomes available.
Birth Weight	BW	A predictor of a sire's ability to transmit birth weight to his progeny compared to that of other sires.
Weaning Weight	WW	A predictor of a sire's ability to transmit weaning growth to his progeny compared to other sires.
Yearling Weight	YW	A predictor of a sire's ability to transmit yearling growth to his progeny compared to other sires.
Maternal Milk	MILK	A predictor of a sire's genetic merit for milk & mothering ability expressed in his daughters compared to daughters of other sires.
Total Maternal	TM	A prediction of the total contribution of a sire's daughter to calf performance.
Scrotal Circumference	SC	A predictor of the difference in transmitting ability for scrotal size compared to that of other sires.
Rib Fat	FAT	A predictor of the differences in external fat thickness at the 12th rib of a sire's progeny compared to progeny of other sires.
Ribeye Area	REA	A predictor of the difference in ribeye area of a sire's progeny compared to progeny of other sires.
Intramuscular Fat	IMF	The difference in ribeye area of a sire's progeny for percent intramuscular fat in the ribeye muscle compared to progeny of other sires.
Rump Fat	RUMP	A predictor of the differences in external fat thickness at the juncture of the gluteus medius and superficial gluteus medius muscles of a sire's progeny compared to progeny of other sires.

Beefmaster Breed Average Expected Progeny Differences (EPDs)

BW	WW	YW	MILK	TM	SC	FAT	REA	IMF	RUMP
0.2	9	13	2	6	0.2	0.00	0.04	0.0	0.01

* = Pacesetter • ** = Typesetter • EPDs updated February 2014 • Red EPDs represent trait leaders



DBLD BAR RANCH

ANGELO

was born and developed on our ranch and started breeding heifers at 13 months of age. An L Bar 5502 son out of a Ronnie Ranly cow, Angelo has never stopped working on our ranch. We have had no calving problems on any of the first calf heifers he has bred. Angelo is the most popular bull in Thailand for cross breeding all dams with no reported calving difficulty. His easy disposition and deep red color which is branded on his off-spring.

L BAR 5502	L BAR 2174 637639	L BAR 9239 634539
	BROUSSARD 0/3918 C644217	L BAR 9479 635353 BROUSSARD 6/2531 C657842 BROUSSARD 7/2874 C657851
225 (3225LH) C878944	LASATER 9617 637639	LASATER 6129 LH C714591
	RANDY 850 C762239	LASATER 6701 LH C711383 WAR EAGLE 6 2006 LE C663624 RANDY 6117 LH C689921



Expected Progeny Difference...

BW	WW	YW	Milk	Tot Mat	Scr
-0.8	+17	+22	-0.9	-1	+0.3

Proven Genetics: (239/05) Cert# C927553 • DOB 1/1/05

Semen: \$45 Per Straw AI Certificate.

Volume and Cross Breeding Discounts Available. Minimums Apply.

EL DORADO

was a top herd sire in the ISA Cattle Company breeding program as L Bar 6165. He was purchased from Laurie and Lorenzo Lasater at private treaty to expand the Lasater bloodline in our herd. In 2012, his progeny were among the top bulls sold at the ISA Cattle Company Bull Sale in San Angelo. He is being used as a herd sire on our performance dams and his semen is now being introduced for sale domestically and for international export.

L BAR 2427 C872425	L BAR 7499 754134	L BAR 1167 634993 0/3950 644222
	2/4524 RT 644288	
L BAR 4256 C900262	L BAR 9423 810571	L BAR 7372 730925 L BAR 7426 754149
	L BAR 9477 635352	L BAR 727 639465



Expected Progeny Difference...

BW	WW	YW	Milk	Tot Mat	Scr
+1.9	+11	+16	+2.0	+7	+0.7

Herd sire: (6165) Cert # C935662 • DOB 2/26/06 Semen:

\$65 Per Straw AI Certificate.

Volume and Cross Breeding Discounts Available. Minimums Apply.

D'VINCI

was the #1 bull in the 2010 Beef On Forage Sale, as well as, his sire in the 2007 BOF Sale. He graded as the top conformance bull at the 2010 sale, and has proven to be among the most popular herd sire bulls for cross-breeding in Thailand. His ranch progeny are outstanding and will be competing for the top bull in the 2013 Beef On Forage Performance Test and Sale.

BLAU 592 LH CN16440	LASATER 1673 LH C857992	LASATER 7615 LH C756547 LASATER 9721 LH C876200 LASATER 7532 LH C756533 BLAU 018 LH C833159
	BLAU 337 LH C886452	ROCKER 160 LH C494325 ROCKER 010 LH C437998 DENBOW 965 LH C392010 COTTON
WALKER 015 LH C819009	ROCKER 531 LH C622421	BOYDSTUN 108 LH C430058
	WALKER 726 LHC719052	



Expected Progeny Difference...

BW	WW	YW	Milk	Tot Mat	Scr
+2.4	+20	+36	-1.0	+10	+0.14

Herd sire: (803) Cert # C963878 • DOB 1/12/08

\$65 Per Straw AI Certificate.

Volume and Cross Breeding Discounts Available. Minimums Apply.

2009 Beef On Forage Performance Data #1 Bull for Index and Grading out of 150+ Contemporary Bulls

Forage Test (162 days) W.D.A.: 2.63 Ratio: 121.32 Supplement Test (62 days) A.D.G.: 5.10 Ratio: 143.39 Scrotal: Yrlg: 38.5 18 Sept 09: 43.0 Carcass Ultrasound: REA: 13.8 REACTWT: 1.13 %IMF: 3.02

DOYLE & DOROTHY SANDERS • RANCH: 8986 FM 109, INDUSTRY, TX 78944 • WWW.DBLDDBAR.COM

OFFICE: 28234 New Bremen Rd., New Ulm, Tx, 78950_979.357.2232_dsanders@industryinet.com

EMS Fire House



Grand Champion Bull
2014 Ft. Worth Livestock Show

BBU No.	C1023726								
Birth Date	1/22/2012								
ID Number	261								
DNA Case No.	US9001082247 PV								
BW	0.6	WW	19	YW	33	MILK	2	TM	11
	.50		.47		.47		.14		-
SC	0.3	FAT	0.02	REA	0.38	IMF	-0.1	RUMP	0.10
	.24		PE		PE		PE		PE

BLACK BAYOU 1071/3 LE C892444
DNA US3000542 BT 8891A
BONFIRE 8038 LE C968248
DNA US3000914 PV
EMS AMAZING ACE 630 LE C930525
DNA 991A
BLACK CAVALIER 19/4 LE C888745
DNA 409A US3000919 PV BT 8508A
EMS STYLISH JEZZY 849 LE C957225
DNA 9000129880
JEZABELLE 62J8 LE C801257
DNA 371399A BT 6925A

EMS Smooth Cavalier



2009 National Champion Bull

BBU No.	C953094								
Birth Date	10/3/2006								
ID Number	708								
DNA Case No.	US3000910 PV								
BW	1.9	WW	21	YW	16	MILK	-1	TM	10
	.86		.83		.81		.33		-
SC	0.9	FAT	-0.06	REA	-0.16	IMF	0.0	RUMP	-0.25
	.58		.60		.62		.65		.63

** SPARTACUS 86/653 RH C317158
DNA 9A BT 3116A
** CAVALIER 19/5 LH C617557
DNA 302A BT 5679A
** 1-5/5 LH C245236
BT 2171A
EMS SMOOTHCONNECTION 698 LE C654949
DNA 4919926 BT 6203A
EMS BODY BY SMOOTH 0-31 LH C820410
DNA 4919925 BT 7700A
EMS JACKIE 5-1 LS C618349

EMS Color Me Smooth



Grand Champion Female

BBU No.	C1004003								
Birth Date	2/2/2011								
ID Number	107								
DNA Case No.									
BW	1.6	WW	19	YW	21	MILK	0	TM	10
	.51		.47		.44		.15		-
SC	0.5	FAT	-0.07	REA	-0.04	IMF	-0.1	RUMP	-0.24
	.28		.26		.28		.28		.28

** CAVALIER 19/5 LH C617557
DNA 302A BT 5679A
EMS SMOOTH CAVALIER 708 LH C953094
DNA US3000910 PV
EMS BODY BY SMOOTH 0-31 LH C820410
DNA 4919925 BT 7700A
** L2 CAPTAIN SUGAR 12/02 LR C857153
DNA 134A BT 7526A
EMS COLOR ME SUGAR 811 LE C957217
DNA 9000129881
MAGIC COLORS CL022 LE C874043
DNA 937A BT 8794A

EMS Eye Candy



Grand Champion Female

BBU No.	C1005060								
Birth Date	3/25/2011								
ID Number	124								
DNA Case No.	9000423544								
BW	1.4	WW	14	YW	11	MILK	2	TM	9
	.51		.36		.34		.14		-
SC	0.5	FAT	-0.02	REA	0.04	IMF	-0.1	RUMP	-0.19
	.23		.24		.24		.26		.26

** CAVALIER 19/5 LH C617557
DNA 302A BT 5679A
EMS SMOOTH CAVALIER 708 LH C953094
DNA US3000910 PV
EMS BODY BY SMOOTH 0-31 LH C820410
DNA 4919925 BT 7700A
ACE IN THE HOLE 703/ LE C898727
DNA 249A BT 8285A
EMS BUFF'S JEWEL 8061 LH C978529
DNA US4041904 PV
EMS MISS BUFF 86-6 LE C638483
DNA 4919923 BT 7699A

Emmons Ranch • Steve & Cindy Emmons
Fairfield, Texas • 903.879.4567
www.EmmonsBeefmasters.com



Where Champions Are Born!
Using Emmons Ranch sires can produce champions like these!
Semen: \$15/straw International and Commercial

Foundation 712



BW	74
Ratio	107
WW	734
Ratio	108
YW	807
Ratio	104
SC YR	32cm
SC 20mo	43cm

	BW	WW	YW	MILK	TM	SC	FAT	REA	IMF	RUMP
EPD	0.6	21	23	4	15	0.5	-0.10	0.43	-0.2	0.01
ACC	.82	.80	.75	.31	-	.59	.58	.56	.62	.60

Foundation 712

BBU No.	C951715
Birth Date	1/2/2007
ID Number	712
DNA Case No.	US3000898 PV
Forage Test Ratio	109
Feed Test Ratio	123

BBU Classified U 1/2

L BAR 1167 LH C634993

L BAR 7499 7499 LH C634993

BT 6841A BROUSSARD 0/3950 RT C644222

L BAR 1473 1473 LH C849921 ** L BAR 5502 LH C663482

DNA 399128A

* L BAR 8404 LH C782057 DNA 056071A BT 6208A

DNA 663A BT 8883A L BAR 6415 LH C711005

OLE YELLER 5367 LH C641922

FRENZEL 1230-3 LH C808116 BT 4289A

* FRENZEL 1212 LH C838402 * LASATER 9510 LH C630805

DNA 396819A DNA US400134765 BT 5545A

* FRENZEL 8129 LH C764904

FRENZEL 1331 LH C677134

- An easy fleshing, high growth bull with outstanding performance.
- Five Pacesetters in his pedigree.
- Out of 151 contemporaries, Foundation 712 was the high scoring and number one bull at the 2008 Beef On Forage Performance Bull Test Sale.
- Sired the two high selling bulls at the 2012 Beef on Forage Performance Bull Sale, including a record high selling price \$17,000.
- Ranked as a REA Trait Leader in 2013 Fall Sire Summary.



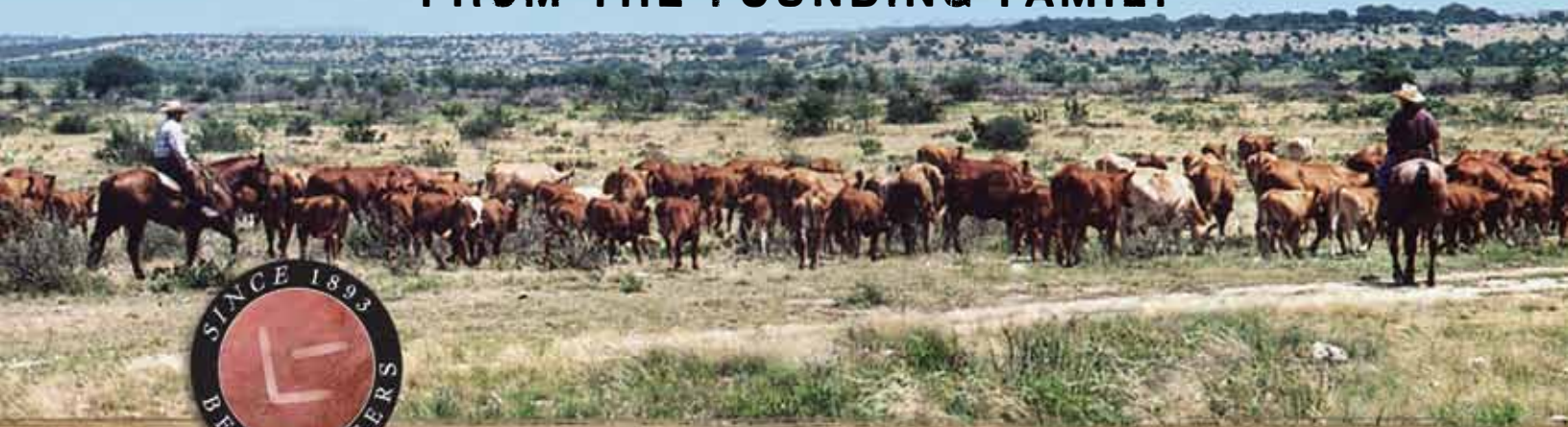
Semen: International \$25/straw - Domestic \$35/straw - Volume Discounts Available
Frenzel Beefmasters

Gary & Derek Frenzel • Temple, Texas
www.FrenzelBeefmasters.com

Gary Frenzel • 254.721.2214 • gary@frenzelbeefmasters.com
 Derek Frenzel • 254.541.4643 • derek@frenzelbeefmasters.com

SEMEN & EMBRYOS

FROM THE FOUNDING FAMILY



L BAR EN FUEGO

BW .8 TMAT 16
 WW 24 SC 1.3
 YW 31 REA -.03
 MILK 4 IMF .1

Cert. #C988569
 Classified U 1/1



L BAR INEVITABLE

BW .5 TMAT 11
 WW 7 SC -1.2
 YW 15 REA -.02
 MILK 7 IMF .1

Cert. #C954343
 Classified U 1/1



L BAR ESSENTIAL

BW -2 TMAT 7
 WW 2 SC -.1
 YW 14 REA .3
 MILK 6 IMF 0

Cert. #C954335
 Classified U 1/1



L BAR AUTOMATIC

BW -1 TMAT 14
 WW 22 SC .6
 YW 17 REA -.25
 MILK 3 IMF 0

Cert. #C914725
 Classified U 1/1



L BAR 2474

BW -1.3 TMAT 8
 WW 7 SC -.3
 YW 9 REA -.24
 MILK 4 IMF .1

Cert. #C872425
 Classified U



L BAR 0324

BW -1.4 TMAT 8
 WW 24 SC 1.6*
 YW 32 REA .23
 MILK -5 IMF 0

Cert. #C818452
 Classified U



* Trait Leader

L BAR 4401

BW 3.2 TMAT 22
 WW 35* SC .6
 YW 47* REA -.05
 MILK 5 IMF 0

Cert. #C914673
 Classified U



* Trait Leader

25+ STRAWS—\$30 EACH
50+ STRAWS—\$25 EACH
100+ STRAWS—\$20 EACH

Orders can be any combination of sires.
 Freight additional. Quantity limited on some sires.

L BAR EMBRYOS—\$299 EACH

Featuring L Bar 3432, L Bar 5502 & L Bar En Fuego plus top L Bar dams

We have inventory available
 in Mexico, Brazil, Thailand
 and South Africa.



Lorenzo Lasater
 San Angelo, Texas
 325.942.1458
 lorenzo@isacattleco.com
 www.isacattleco.com



Lasater Beefmasters

P.O. Box 38
 Matheson, CO 80830
 719-541-BULL (2855)
 www.LasaterRanch.com
 Dale Lasater, 719-338-8893
 Alex Lasater 210-872-1117

**"The Pedigree
 is in the Name"**



Semen Available from these Lasater Herd Sires

Lasater Beefmaster 8208

Sired by one of our most prolific semen sires 4290; who sired 6 outstanding Lasater Ranch Herd Bulls. He is long and well-muscled, the way he is built stands out in a group. As a three year old he was well ahead of his peers in scrotal measurement. He sired by far the most calves born in 2012..... 33 bull calves: 15 had IMF ratios of over 100, 12 had REA ratios of over 100, 14 had yearling ratios averaging 105



<u>WN</u>	<u>Wn-Yr</u>	<u>YR</u>	<u>2 YR</u>	<u>3YR</u>	<u>SC</u>	<u>Sire</u>	<u>Dam</u>
<u>WT</u>	<u>Gain</u>	<u>WT</u>	<u>WT</u>	<u>WT</u>			
632	258	890	1350	1665	41	4290	2067



Lasater Beefmaster 7261

The newest addition to our AI lineup is 7261. An extremely prolific breeder. After we chose the 2012 keep bulls, 15 from a group of 160, we learned that he sired 5 of the ones we elected to have join our herd sire battery. He is out of a proven 5 year old dam. Very thick and correct. He is very gentle.

<u>WN</u>	<u>Wn-Yr</u>	<u>YR</u>	<u>2 YR</u>	<u>3 YR</u>	<u>SC</u>	<u>Sire</u>	<u>Dam</u>
<u>WT</u>	<u>Gain</u>	<u>WT</u>	<u>WT</u>	<u>WT</u>			
604	174	778	1240	1660	40	3512	2759

Smith & Wesson

1st Production Sale



	BW	WW	YW	MILK	TM	SC	FAT	REA	IMF	RUMP
EPD	1.5	12	15	2	8	0.3	-0.05	-0.13	0.0	-0.08
ACC	.55	.38	.38	.17	-	.21	.24	.26	.26	.26

SMITH & WESSON (43-09)

BBU No.	C978568
Birth Date	3/6/2009
ID Number	43-09
DNA Case No.	643603A PV

BULLET PROOF 864 LE C931489
 DNA US9000957935 PV
**** CJ'S BANDELERO 960LH C809701**
 DNA 100A BT 7189A
**** OASIS 655 LE C828198**
 DNA 251620A BT 7628A
ACE IN THE HOLE 70/3 LE C898727
 DNA 249A BT 8285A
MARISSA 22/7 LT C944803
 DNA 504519A PV
LADY CHEROKEE 700 LE C828215
 DNA 498A BT 8624A

Bullet Proof x Marissa

Join Painted Springs Beefmasters on **October 4, 2014** for Smith & Wesson's first production sale at the Painted Springs Ranch in Thompson Station, Tennessee.



Kix Brooks · Mike Leatherwood
 3711 Bear Creek Road, Thompson Station, TN
 615.477.0560
www.PaintedSpringsBeefmasters.com

Sale Manager & Herd Consultant
Mike Green, 3G Sales & Service
 979.229.6563 • threeg1990@yahoo.com

Forty-Four Magnum



BBU No.	C902554
Birth Date	9/13/2003
ID Number	34
DNA Case No.	784A BT 9035A

531 LT C696529
 CATALYST 729 729 LT C775905
 BT 7216A
 LASATER 610 LH C692462
 ** FORTY-FOUR 44/6 LR C301999
 ** 20 LH C842447 BT 3612A
 2 RH C751643
 DNA 783A BT 9034A

	BW	WW	YW	MILK	TM	SC	FAT	REA	IMF	RUMP
EPD	0.9	-3	6	7	6	-0.4	-0.05	0.03	0.1	-0.07
ACC	.83	.82	.79	.62	-	.50	.62	.62	.64	.64

- Clean, heavy-muscled and solid red bull raised at Rancho Tres Hijos.
- Classified U 1/2, used extensively as a clean-up bull at Rancho Tres Hijos.
- Produced excellent calves for several years, recently retired and sold to Mexico.



Rojo Bueno



BBU No.	C950757
Birth Date	3/29/2007
ID Number	7800
DNA Case No.	US3001398

LASATER LH C788156
 LASATER 0192 LH C834456
 BT 7864A
 LASATER LL C786517
 BT 9347A
 LASATER 3062 LH C658714
 BT 9299A

	BW	WW	YW	MILK	TM	SC	FAT	REA	IMF	RUMP
EPD	-0.8	14	15	5	12	0.4	0.06	0.04	0.2	-0.02
ACC	.77	.74	.66	.24	-	.39	.34	.36	.39	.36

- Raised in the brush country of South Texas since he was 6 months old.
- Does an excellent job in adding muscle to calves, thick with excellent conformation.

Rancho Tres Hijos Beefmasters • Arthur W. Epley III • Houston, Texas

713.898.8044 • www.3Hijos.com • rancho@3hijos.com • Foreman, Guy Martin: 631.274.3705

Semen: \$50/straw • Volume Discounts Available on Bulls: 20% for 100+straws & 40% for 1000+straws

Colonel Tom



BBU No.	C989984
Birth Date	11/29/2009
ID Number	31/0
DNA Case No.	MMD0195011

LASATER 0192 LH C834456
 BT 7864A
 ROJO BUENO 7800 LH C950757
 DNA US3001398
 LASATER 3062 LH C658714
 BT 9299A
 L BAR 7303 7303 LH C705955
 BT 6497A
 RTH 103/8 LH C962506
 BROUSSARD 0/3918 RT C644217
 BT 6746A

	BW	WW	YW	MILK	TM	SC	FAT	REA	IMF	RUMP
EPD	1.1	28	35	-1	13	0.5	0.04	0.09	0.2	0.02
ACC	.64	.60	.55	.15	-	.29	PE	PE	PE	PE

- Very thick, solid red bull that has produced excellent calves for Rancho Tres Hijos.
- Outstanding EPDs that will help any breeder add muscle & conformation in their herd.
- Classified U 1-2



Special Edition



BBU No.	C944935
Birth Date	11/7/2006
ID Number	19/7
DNA Case No.	425798A

CAIN 537 LT C696529
 CATALYST 729 729 LT C775905
 BT 7216A
 LASATER 610 LH C692462
 OLE YELLER 5367 LH C641922
 N-R 5 LE C858298 BT 4289A
 DNA 399134A
 AC GINA 500G LE C742390
 BT 7473A

	BW	WW	YW	MILK	TM	SC	FAT	REA	IMF	RUMP
EPD	1.1	13	21	5	12	0.0	-0.06	-0.06	0.0	0.02
ACC	.62	.62	.60	.38	-	.36	.50	.48	.52	.52

- Very clean, heavy-muscled, solid red bull raised at Rancho Tres Hijos.
- Produced several good calves, sold in 2009 and is presently in Mexico.

Rancho Tres Hijos Beefmasters • Arthur W. Epley III • Houston, Texas

713.898.8044 • www.3Hijos.com • rancho@3hijos.com • Foreman, Guy Martin: 631.274.3705

Semen: \$50/straw • Volume Discounts Available on Bulls: 20% for 100+straws & 40% for 1000+straws

CF Adrenaline



	BW	WW	YW	MILK	TM	SC	FAT	REA	IMF	RUMP
EPD	0.6	9	20	-2	3	0.2	0.12	-0.08	0.3	0.09
ACC	.84	.81	.77	.34	-	.54	.52	.56	.56	.52

CF ADRENALINE (170)

BBU No.	C965778
Birth Date	5/10/2008
ID Number	170
DNA Case No.	US3000940 PV

** RED SUGAR 104/93 LH C529759

DNA 184A BT 4550F

** INFINITY 120/96 LH C706197

DNA 674A BT 5956A

** VANNA 5660 LH C273206

BT 2933C

** CAVALIER 19/5 LH C617557

DNA 302A BT 5679A

** OASIS 655 LE C828198

DNA 251620A BT 7628A

** SEX LIFE 388 LE C714150

DNA 313360A BT 6533C

Infinity x Oasis

- Legendary Beefmaster genetics all wrapped up here for you in a powerful sire.
- Top pick for your next flush or AI breeding.
- Offers the complete package of great looks, balanced performance and proven genetic predictability.

Owned By:

CF Adrenaline Syndicate

**Semen Available
Volume Discounts**

**To Place Your Semen Order, Contact:
Bruce Robbins, RCCM
210.861.5136 • robbinscattle@att.net**

CF N-Sync



	BW	WW	YW	MILK	TM	SC	FAT	REA	IMF	RUMP
EPD	0.0	31	48	-1	15	1.2	0.01	-0.17	0.1	0.00
ACC	.59	.58	.56	.36	-	.58	PE	PE	PE	PE

CF N-Sync (463)

BBU No.	C995907
Birth Date	5/27/2010
ID Number	463
DNA Case No.	US400002630 PV

Synergy x Oasis

- Powerful young sire and you can see the genetic trail he has followed. Legendary family members of *Levi*, *Crimson Warrior*, *King Cotton*, *Robert E. Lee*, *Ranger's Pride*, *The Cotton Cow*, *Lady Phantom*, *Phannie Mae* and *Sugar Ann*.
- Perfect fit, superior genetics, proven performance and Zipperer Beefmasters is dedicated to producing versatile, hard working cattle.

** RED SUGAR 104/93 LH C529459

DNA 184A BT 4550F

** SYNERGY 84/95 LH C615710

DNA 183A BT 5779A

** PRISSY LADY 117/93 LH C537931

BT 5207A

** CAVALIER 19/5 LH C617557

DNA 302A BT 5679A

** OASIS 655 LE C828198

DNA 251620A BT 7628A

** SEX LIFE 388 LE C714150

DNA 313360A BT 6533C

Zipperer Beefmasters

Jennie Lee Zipperer & R. Douglas Zipperer
Ft. Myers, Florida
239.851.2941 • jlziv@yahoo.com

For Semen Sales Contact:

Bruce Robbins, RCCM
210.861.5136 • robbinscattle@att.net

CF Sugar Bear



	BW	WW	YW	MILK	TM	SC	FAT	REA	IMF	RUMP
EPD	0.0	26	34	-2	11	0.8	0.10	-0.01	0.1	-0.03
ACC	.79	.71	.65	.33	-	.54	.47	.47	.48	.48

CF SUGAR BEAR (933)

BBU No.	C977252
Birth Date	2/1/2009
ID Number	933
DNA Case No.	US3000936 PV

** L2 CAPTAIN SUGAR 12/02 C857153

DNA 134A BT 7526A

** INFINITY 120/96 LH C706197

DNA 674A BT 5956A

** SUGAR ANN 45/6 LE C289536

BT 2936D

** CAVALIER 19/5 LH C617557

DNA 302A BT 5679A

** OASIS 655 LE C828198

DNA 251620A BT 7628A

** SEX LIFE 388 LE C714150

DNA 313360A BT 6533C

Captain Sugar x Oasis

- Great looks, complete performance EPD numbers and an unsurpassed pedigree of proven through production genetics.
- Great choice for any breeding program looking to produce a better Beefmaster product.

Owned By:

CF Sugar Bear Syndicate

**Semen Available
Volume Discounts**

**To Place Your Semen Order, Contact:
Bruce Robbins, RCCM
210.861.5136 • robbinscattle@att.net**

Bull & Female Index

ANGELO.....2	L BAR 0324..... 5
BULLET PROOF.....Inside Cover	L BAR 2474..... 5
CF ADRENALINE..... 10	L BAR 4401..... 5
CF N-SYNC..... 11	L BAR AUTOMATIC..... 5
CF SUGAR BEAR..... 12	L BAR EN FUEGO.....5
COLONEL TOM.....9	L BAR ESSENTIAL..... 5
D'VINCI..... 2	L BAR INEVITABLE..... 5
EL DORADO.....2	LASATER 8208..... 6
EMS FIRE HOUSE.....3	LASATER 7261..... 6
EMS SMOOTH CAVALIER..... 3	LOGAN.....Back Cover
EMS COLOR ME SMOOTH..... 3	NEW DIMENSION.....Back Cover
EMS EYE CANDY..... 3	ROJO BUENO..... 8
FORTY-FOUR MAGNUM..... 8	SMITH & WESSON.....7
FOUNDATION 712.....4	SPECIAL EDITION..... 9
FUSION.....Back Cover	VISION 905..... Back Cover

Owner Index

CF ADRENALINE SYNDICATE... 10	ISA CATTLE CO..... 5
CF SUGAR BEAR SYNDICATE...12	LASATER BEEFMASTERS..... 6
COLLIER FARMS.....Back Cover	PAINTED SPRINGS RANCH.....7
DBL D BAR RANCH.....2	RANCHO TRES HIJOS..... 8-9
EMMONS RANCH..... 3	SWINGING B RANCH..... Inside Cover
FRENZEL BEEFMASTERS.....4	ZIPPERER BEEFMASTERS..... 11

All international semen is Certified Semen Services, Inc. (CSS) certified.

Collier Farms

BEEFMASTERS

Breeding Productive
Profitable Cattle

Logan
C883222



Compromise Nothing

QUASAR 991 DNA 26B

JEZABELLE 62J8 DNA 371399A

** CAVALIER 19/5 DNA 302A

MARILYN 19/5

** RED SUGAR 104/93 DNA 184A

** MISS JUDY 6/91

Fusion
C907807



Powerful Genetic Force

** TABASCO 3018K10 DNA 525673A

** PHANTOM'S DIAMOND 119/9 DNA 900A

** RED TIGER 9075 DNA 367A

JUNGLE SPICE 786 DNA 525674A

PATILLO'S PHANTOM 35/93

** JMU 639/3

Vision
C955655



Look Ahead

** LOGAN 62M27 DNA 322220A

** PENELOPE 293J11 DNA 525668A

QUASAR 991 DNA 26B

JEZABELLE 62J8 DNA 371399A

** PAINTED TIGER 3-390 DNA US3000923

** LADY VICTORIA 236

New Dimension
C912446



Reshape Perfect

V - SEVEN 501

V - SEVEN 1673

CHANNAROCK 869/1

SEVEN-C ANDERSON CATTLE 925

CIRCLE C 40/01 DNA US9001082031

V - SEVEN 175/4

Offering semen & embryos
on the industry's

Premier Herdsires

A large selection of EXPORT READY frozen embryos from the top donors in the breed AVAILABLE NOW!

Volume discounts and CSS certified semen.

www.COLLIERFARMSBEEFMASTERS.com

Ranch: 979-251-4175 • Brenham, TX



LIKE US

